

PRINCIPAL DIMENSIONS

LENGTH	o.a.	52.10	m.
LENGTH	b.p.p.	49.50	m.
BEAM	mld.	11.40	m.
BEAM	o.a.	11.45	m.
DEPTH	at side	5.70	m.
DRAUGHT scantlings		4.60	m.
DRAUGHT		4.25	m.
DEADWEIGHT	approx.	1300	ton

DOMESTIC TANKS

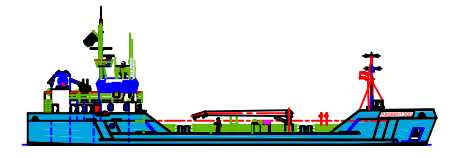
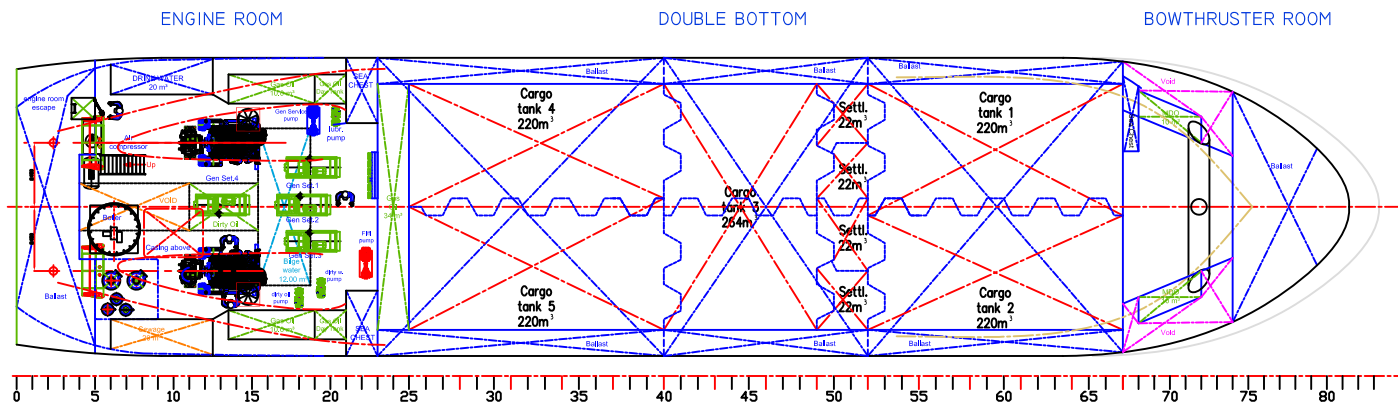
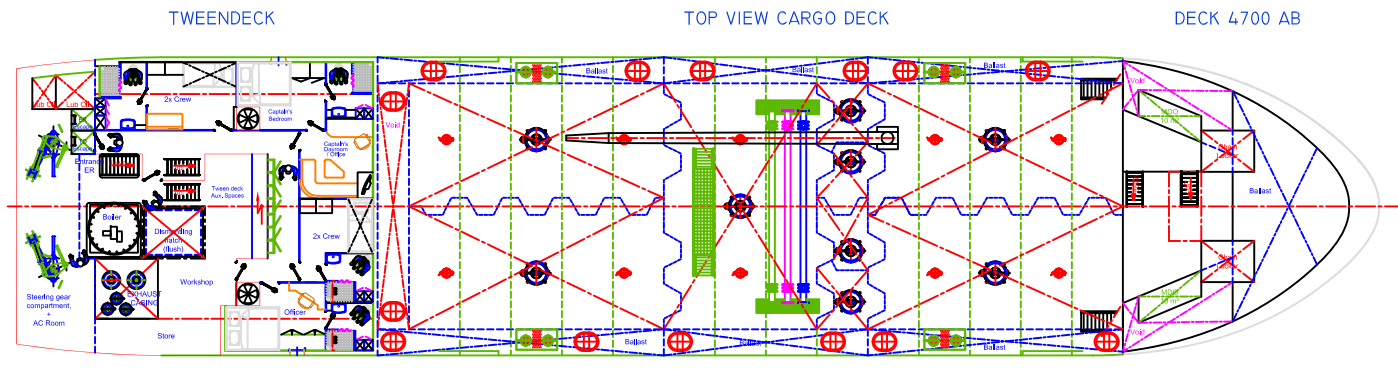
BALLAST WATER	approx.	900	m ³
POTABLE WATER	approx.	25	m ³
FUEL	approx.	59	m ³
LUB. OIL	approx.	3	m ³

CARGO TANKS

CARGO TANK CAPACITY (100%)	4 tanks, approx.	880	m ³
CARGO TANK CAPACITY (100%)	1 tank, approx.	264	m ³
SETTLING TANK CAPACITY (100%)	4 tanks, approx.	88	m ³

CLASS NOTATION

Bureau Veritas or Lloyd's Register
 I 3/3
 HULL
 Oil Tanker (Flash <60degC), 10kPa, ESP
 MACH
 Coastal service 21 miles
 AUT-UMS
 Clean Ship,
 GMDSS A1,
 s.g.1.025 t/m³
 Flag: Liberia



VER.	DATE	NAME	REVISION SUBJECT	APPROVED	DATE
SEAGOING SLUDGE RECEPTION TANKER 1300 DWT GENERAL ARRANGEMENT					
SCALE: 1:100		TMA/NM		DRAWING No.: 30746-0000-091222	
		17-12-2009			

Small text at the bottom left corner, likely a disclaimer or copyright notice.