

**PRINCIPAL DIMENSIONS**

|                    |         |       |    |
|--------------------|---------|-------|----|
| LENGTH             | o.a.    | 66.20 | m. |
| LENGTH             | b.p.p.  | 63.45 | m. |
| BEAM               | mid.    | 11.40 | m. |
| BEAM               | o.a.    | 11.45 | m. |
| DEPTH              | at side | 5.70  | m. |
| DRAUGHT scantlings |         | 4.60  | m. |

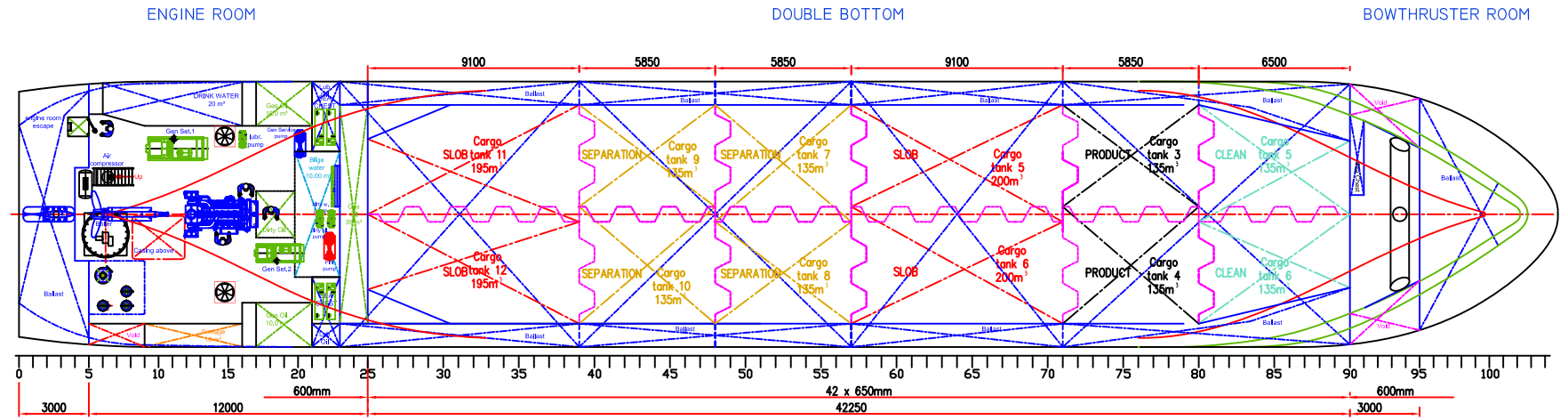
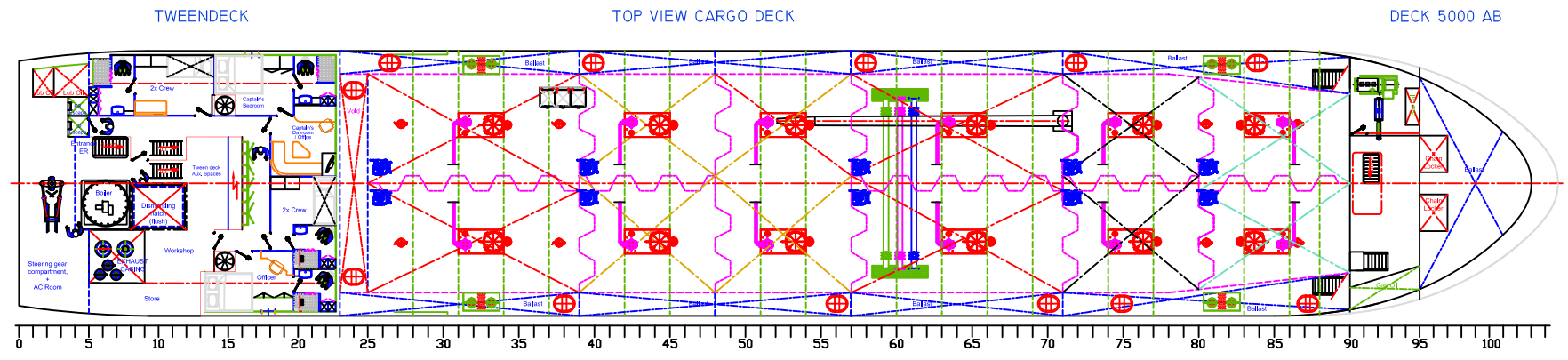
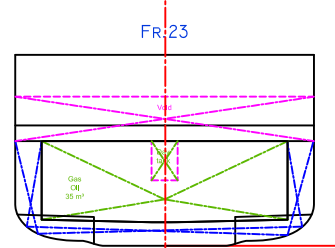
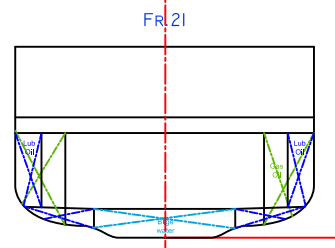
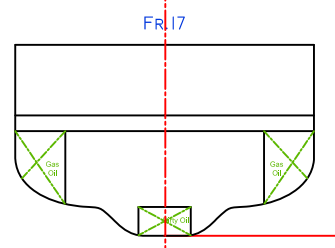
**DOMESTIC TANKS**

|               |         |     |    |
|---------------|---------|-----|----|
| BALLAST WATER | approx. | XXX | m³ |
| POTABLE WATER | approx. | 20  | m³ |
| FUEL          | approx. | 55  | m³ |
| LUB. OIL      | approx. | 3   | m³ |

**CARGO TANKS**

|  |      |    |
|--|------|----|
| CARGO TANK CAPACITY (100%) 2 SLOB tanks, approx.   | 390  | m³ |
| CARGO TANK CAPACITY (100%) 4 SEPARATION tanks, ap. | 540  | m³ |
| CARGO TANK CAPACITY (100%) 2 SLOB tanks, approx.   | 400  | m³ |
| CARGO TANK CAPACITY (100%) 2 PRODUCT tanks, app.   | 270  | m³ |
| CARGO TANK CAPACITY (100%) 2 CLEAN tanks, approx.  | 270  | m³ |
|  | 1870 | m³ |

**CLASS NOTATION**  
 Bureau Veritas or Lloyd's Register  
 I 3/3  
 HULL  
 Oil Tanker (Flash <60degC, 10kPa, ESP)  
 MACH  
 Coastal service 21 miles  
 AUT-UMS  
 Clean Ship,  
 GMDSS A1,  
 s.g.1.025 t/m³  
 Flag: Liberia



|   |      |                                |                  |                  |      |
|---|------|--------------------------------|------------------|------------------|------|
| 26.02.10                                  | NM   | CARGO TANK ARRANGEMENT REVISOR |                  |                  |      |
| 18.02.10                                  | NM   | GEN. SETS, INNERBOTTOM SLOPE   |                  |                  |      |
| VER.                                      | DATE | NAME                           | REVISION SUBJECT | APPROVED         | DATE |
| INEC B.V.                                 |      | Revision 1                     |                  | APPROVED         |      |
| SEAGOING SLUDGE RECEPTION TANKER 1850 DWT |      | GENERAL ARRANGEMENT            |                  | APPROVED         |      |
| SCALE: 1:100                              |      | DRAWING No.: 30964-0000-B      |                  | DATE: 29.01.2010 |      |