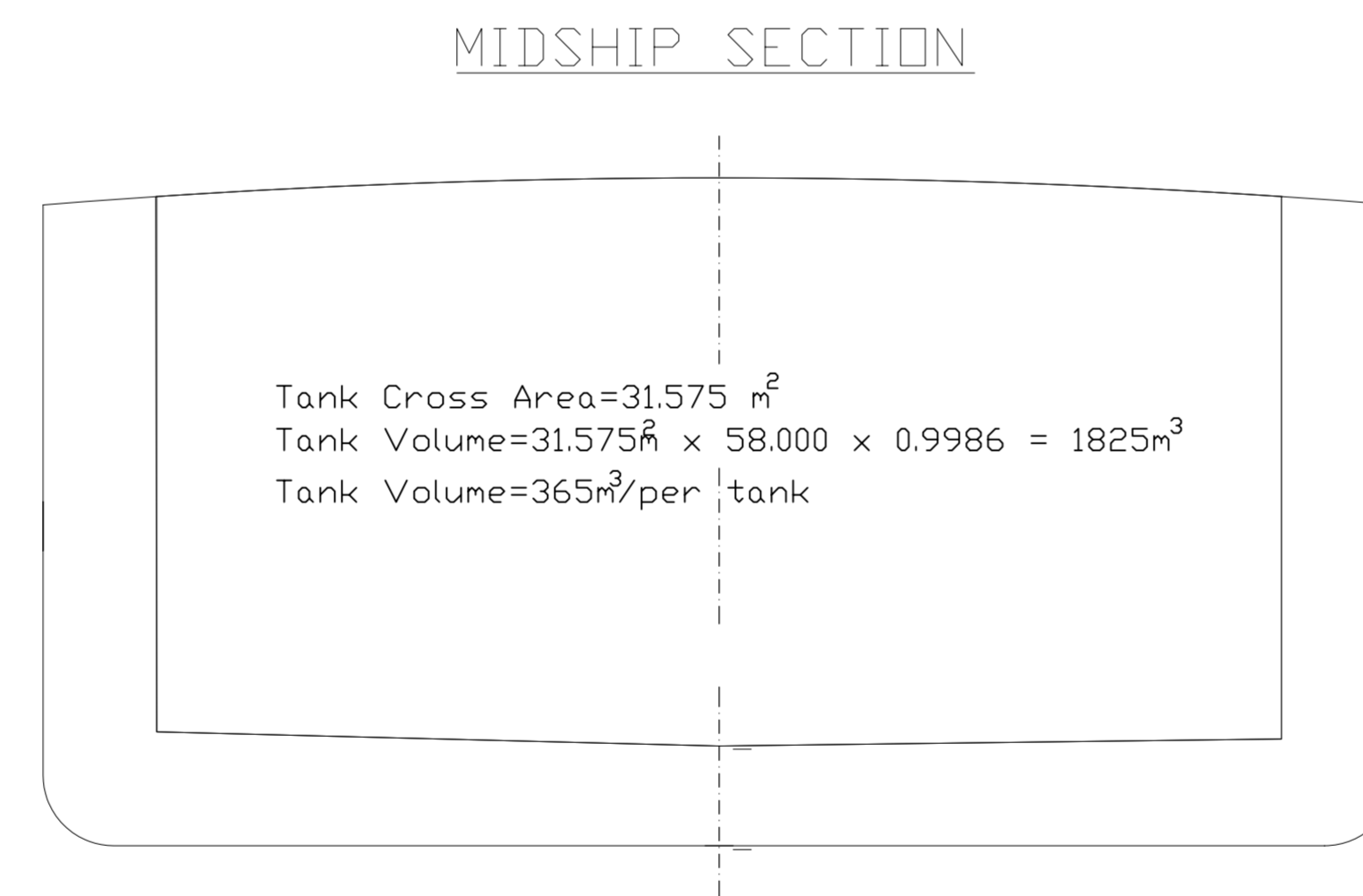
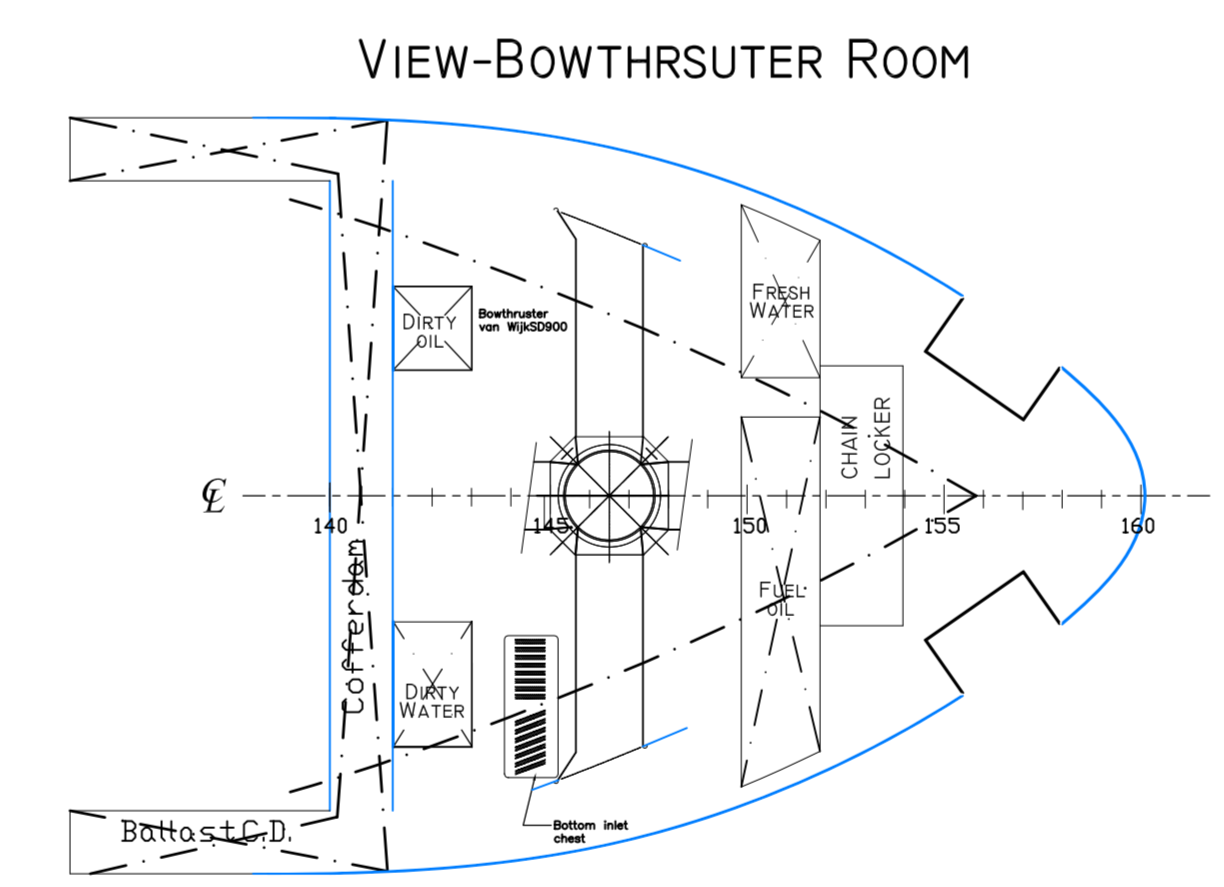


VIEW-ENGINE ROOM



MIDSHIP SECTION



VIEW-BOWTHRUSTER ROOM

Main particulars

Length o.a. max. 86.000 m
 Breadth mid. 9.600 m
 Depth mid. 4.550 m
 Draft - scantling (underside keel) 3.000 m
 Capacity of cargo tanks (100%) 1825 m³

CLASSIFICATION:
 Bureau Veritas
 1 3/3 E-Hull
 • MACH Tanker/FLAM/TOX/COR
 (DP = 50 kPa ; TP = 65 kPa) Type C N12