

Ship name :Broadway

General details

Kind of vessel :Inland tanker barge

Cargo capacity :1267.506 tons at 2.60 mtr draft
:1067.506 tons at 2.30 mtr draft
:868.862 tons at 2.00 mtr draft
empty draft :1.50 mtr

min. air draft :5.50 mtr

Building yard Arminius Bodenwerder Germany

Building year :1962

Certificates

State Port Control : from 23-10-2007 till 23-10-2012

Front ship

Anchor winch :Sanders and son Electric driven
2 anchors 1500 kg each

Mast :aluminium

Accommodation 1 bedroom 1 kitchen/ living1 bathroom

Engine room :yes

Bow thruster :type Kalkman 300 hp 360'

Engine :Daf 1160 300hp

Generator :Perkins 50 Kva 1995

Cargo heating :Watson 750.000 Kcal 1998

Cargo tanks

	Port side ltr	starboard side ltr
Tank 1	66984	67115
2	138749	139462
4	135494	135759
5	133588	133943
6	133632	133921
7	130892	130811

Total :1480350

Cargo level sounding system :mechanical clocks

Cargo pump :Houttuin

Capacity :max 500 M³ p/h

Building year :1985

Driven by :Hydraulic Daf 1160 300 hp

Manifolds :2 port side 2 starboard side

Cargo pipes :2 x 8" 1 x 6"

Heating coils :yes new 1982

Cargo gas collecting pipe :no

Over and under pressure security : no

Fire fighting and deck wash pipe :yes

Sprinkler installation :no

Cargo tank ventilation :no

Bunker boom :yes 6" 15 mtr

Aft ship

Anchor winch :1 anchor electric driven

Wheel house lift :yes 1 mtr

Steering system :Hydraulic Becker

Rudders :2 new 2007

Accommodation :2 bedroom 1 living 1 bathroom 1 kitchen

Heating :Central

Engine room aft ship

Main engine

Type : MTU

Hp :815

Cylinders :12

Rpm :1800

Building year :2001

Revision :2007

Turbo charger :yes

Starting system :electric

Cooling :box cooler closed system

Gearbox :Reintjes

Building year :2001

Engine alarms : all according class

Generator :Hatz 30Kva

Type : Silent pack

Cylinder :4

Kva :30

Cooling :air cooled

Rpm :1500

tanks

Fuel oil front ship	:5000 ltrs
Fuel oil aft ship	: 2 x 15000ltrs
Lube oil front	:100 ltrs
Lube oil aft	:200 ltrs
Drinking water front	:2000 ltrs
Drinking water aft	:5000 ltrs
air compressor	:yes

Navigation equipment

Radar	:Alphatron River Radar
Vhf	:2 x Sailor
Automatic pilot	: Radio Holland combi river pilot
Turn master	:in automatic pilot
Ruther position	:in automatic pilot
Intercom	:6 channel

Inspection

Last dry docking	:2010
Last class	:2007
Last engine	:2007
Last gear box	:2007

Remarks

**The ship is still trading in the Dutch and Belgium bunker business.
She is in a good condition
The painting job is in a good condition.
All maintenance is done and everything is in a good working order.**







Deck



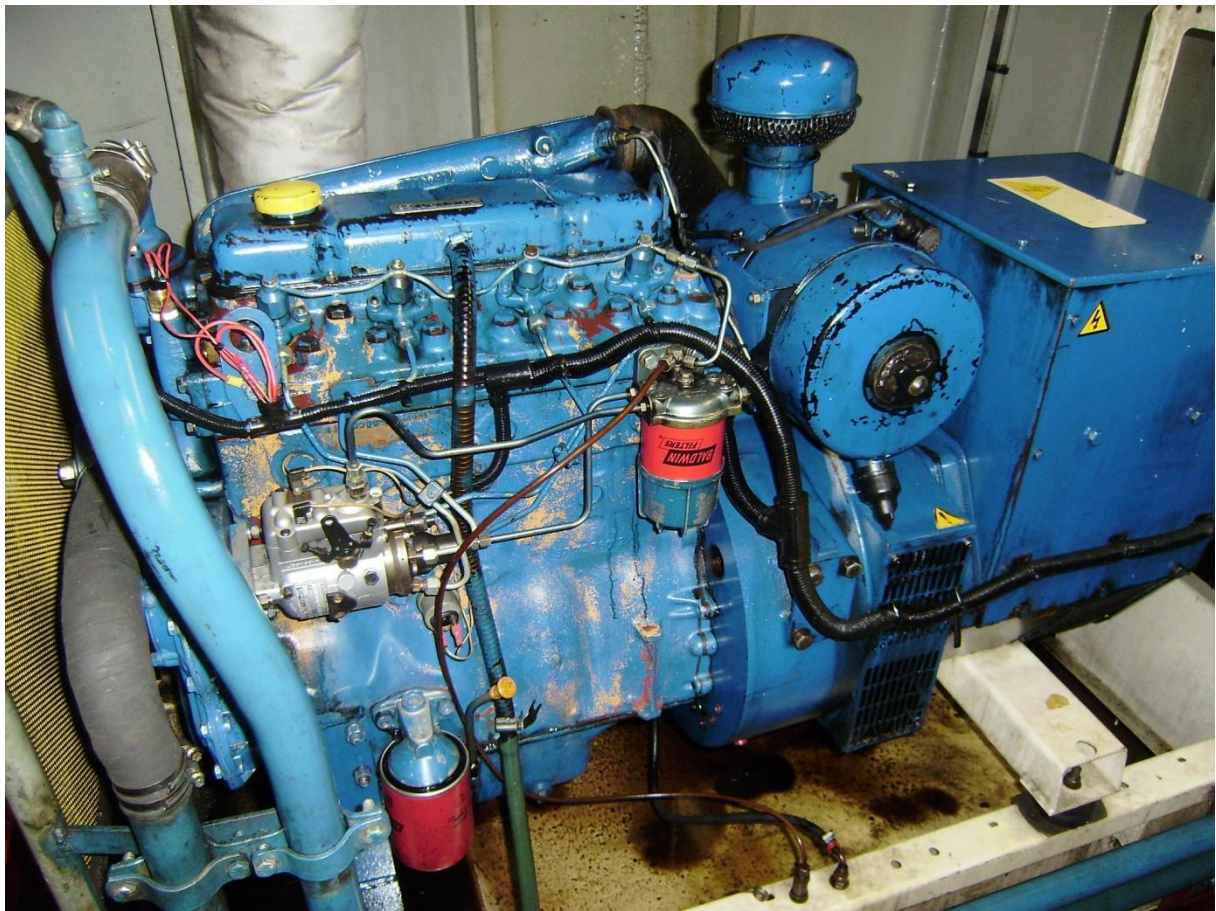
deck



Bunkerboom



Generator aft ship



Generator front



Main engine



Wheelhouse



Kitchen living