

Ship name :Emeraude

General details

Kind of vessel :Inland tanker barge

Length :76.11 mtr

Breath :9.50 mtr

Max draft :2.82

Cargo capacity :1202,712 tons at 2.82 mtr max. draft
: 1001.687 tons at 2.50 mtr draft
: 692.103 tons at 2.00 mtr draft
empty draft : 1.25 mtr

min. air draft :6.20 mtr

Building yard :Bodewes millingen

Building year :1958

Certificates

State Port Control : from 25-04-2008 till 25-04-2013

Class BV. : from 25-04-2008 till 25-04-2013

Front ship

Anchor winch :Liesen electric driven

Mast :aluminium hydraulic

Accommodation :no

Engine room front

Bow thruster	:Elka yet 360'
Engine	:caterpillar 200 hp
Rpm	:1800
Cooling	:box cooler

Generator 1

Type	:Hatz
Cylinder	: 2
Kva	:22 Kva
Building year	: 2008
Cooling	:air

Generator 2

Type	:Hatz
Cylinder	:4
Kva	:45 Kva
Building year	: 2003
Cooling	: air
Cargo heating	:no

Cargo tanks

	Port side M ³	starboard sideM ³
Tank 1	181	181
2	163	163
3	158	158
4	153	153
5	116	116

Total :1542

Cargo level sounding system :computer

Cargo pump	: Houttuin
Capacity	:2 x 250 M³ p/h
Building year	:1990
Manifolds	:2 x 3
Cargo pipes	:3 x 6" all new in 2003
Heating coils	:no
Cargo gas collecting pipe	:yes
Over and under pressure security	:yes
Fire fighting and deck wash pipe	:yes
Sprinkler installation	:no
Cargo tank ventilation	:yes
Bunker boom	:yes 12 mtr

Aft ship

Anchor winch	:Liesen electric driven
Wheel house	:aluminium
Wheel house lift	:no
Steering system	:hydraulic
Rudders	:2

Accommodation aft ship

Port side 1 bedroom,1 kitchen/living,1bathroom
Starboard 2 bedroom,1 kitchen living, 1 bathroom

Air-conditioning	:yes
Heating	:yes

Engine room aft ship

Main engine

Type	:Doosan
Hp	:800
Cylinders	:12
Rpm	:1800
Building year	:2008
Revision	:no
Working hours	:9500
Turbo charger	:yes
Starting system	:electric
Cooling	:box cooler

Gearbox

Type	: Reintjes
Reduction	:5 : 1
Building year	:2008
Revision	:no
Engine alarms	: all according class
Nozzle	:no

Pump engine

Type	:Doosan
Hp	: 180
Rpm	:1800
Building year	:2008
Cooling	: box cooler

Generator

Type	:Lister
Cylinder	:2
Kva	:17.5
Cooling	:air
Rpm	:1500
Air compressor	: 2 x 30 bar

Tanks

Fuel oil front ship	:3000 ltr
Fuel oil aft ship	: 2 x 10.000 ltr
Lube oil aft	:250 ltr
Drinking water front	:no
Drinking water aft	:11.000 ltr
Dirty oil front	:no
Dirty oil aft	:no
Dirty water front	:no
Dirty water aft	:no

Navigation equipment

Radar	:radio Holland colour river radar
Vhf	:2 x sailor
Automatic pilot	:2 x Radio Holland
Turn master	:2 x in auto pilot
Ruther position	:2 x in auto pilot
Intercom	:4 channal

Echo sounder : **Radio Holland**

Navigation system : **Computer**

Inspection

Last dry docking : **2008**

Last class : **2008**

Last engine : **2008**

Last gear box : **2008**

Remarks

the ship is still trading in the Rotterdam, Amsterdam and Antwerp.

She is in a very good condition and easy to handle

The paintjob is on deck as well as in the engine rooms in a very good condition

All maintenance is done when necessary and in good order.

In the cargo piping system is a mechanical flowmeter.

The hull of the ship is strait and there is no damage.



© Ghis v d Vijver
MarineTraffic.com

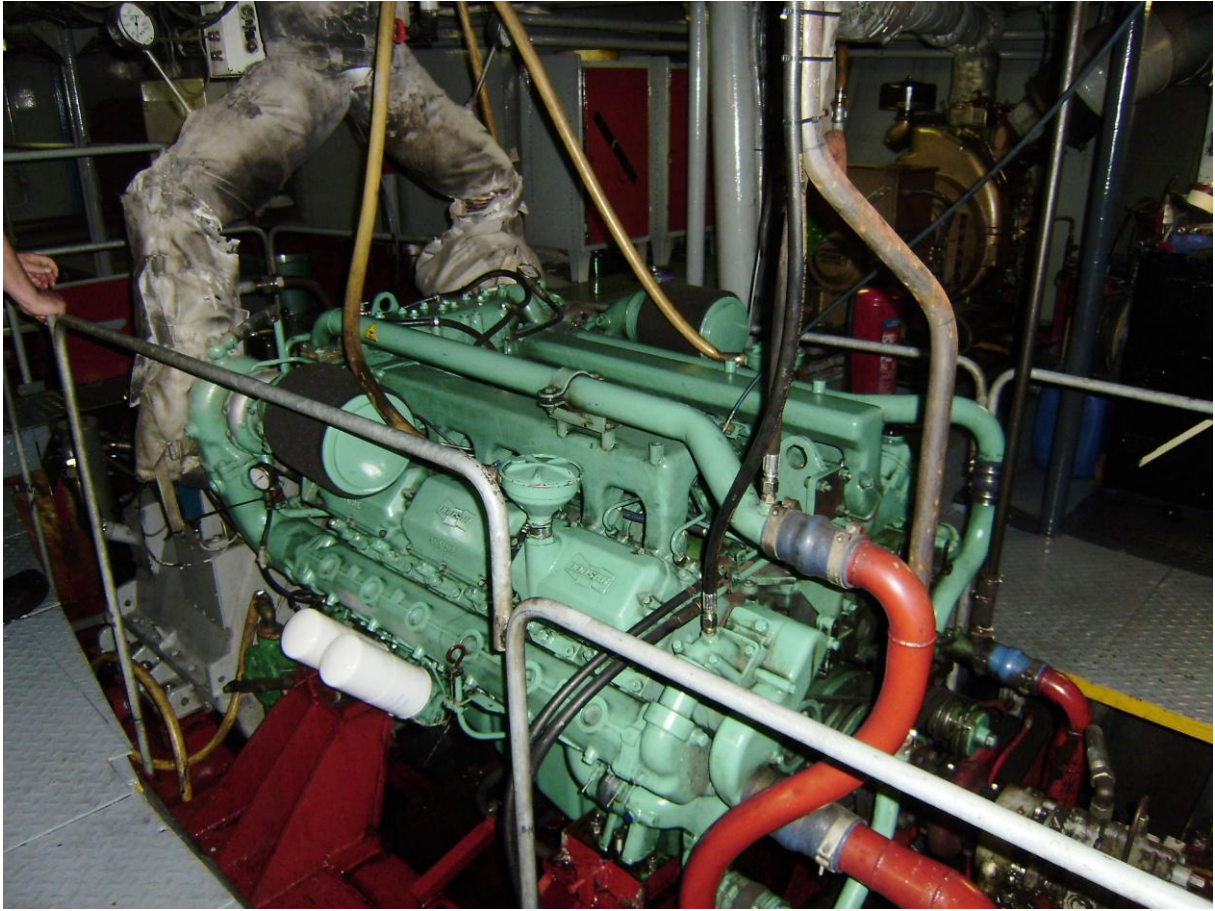
The Barge



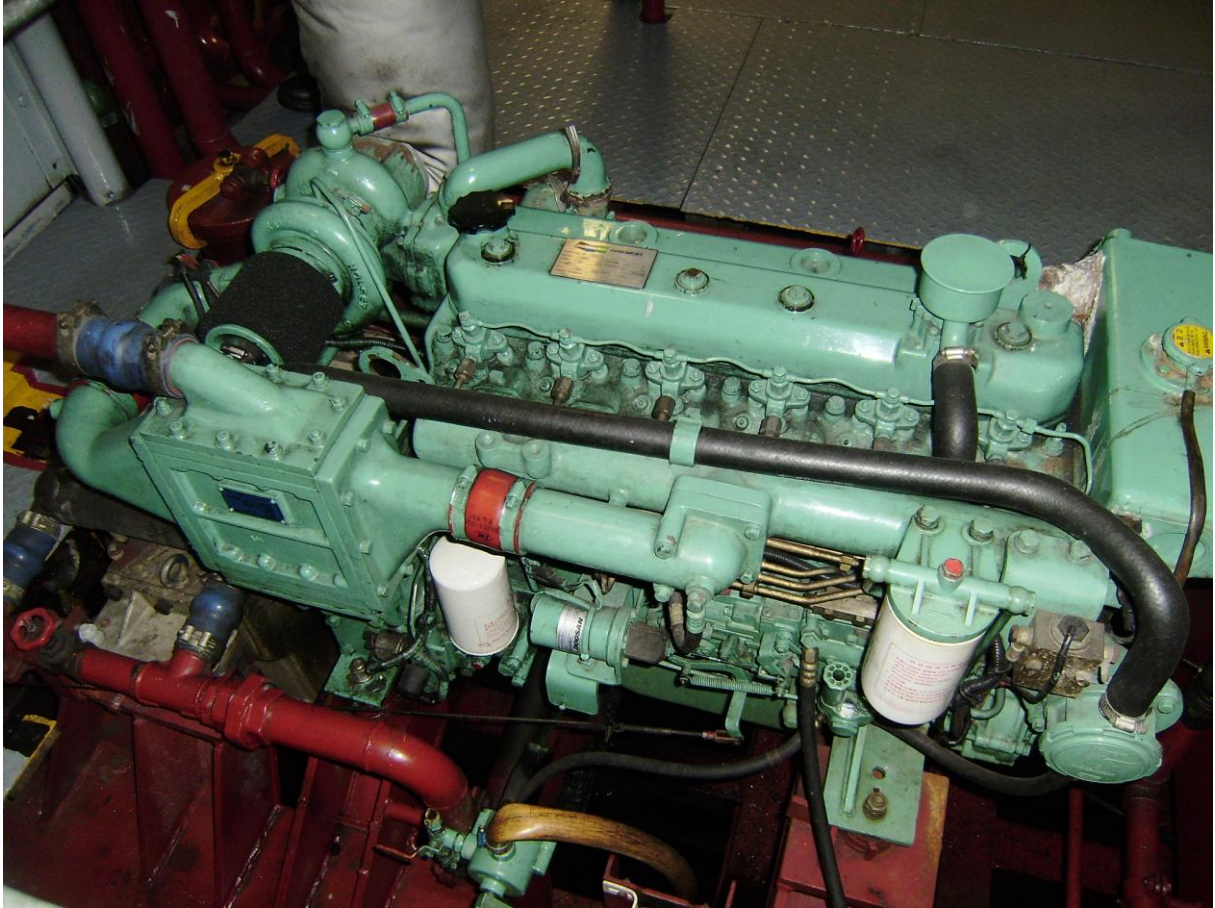
The Wheelhouse



Deck



Main engine



Pump engine



Kitchen / Living



Generator 1 front ship



Flow meter